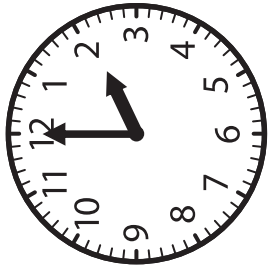


change

**Change is
differences over
time.**

(Unit 5, Lesson 3)



time

**Time is how long
it takes for
something to
happen.**

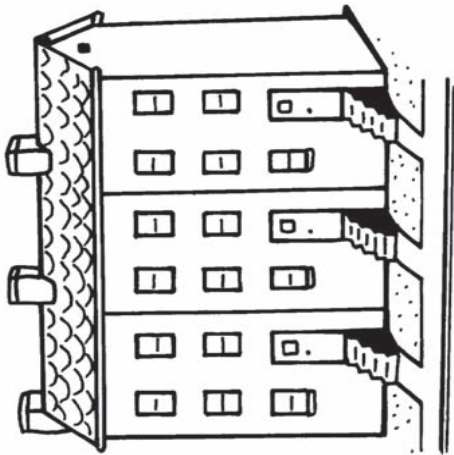
(Unit 5, Lesson 3 Connect to)



then

**Then is some time
in the past.**

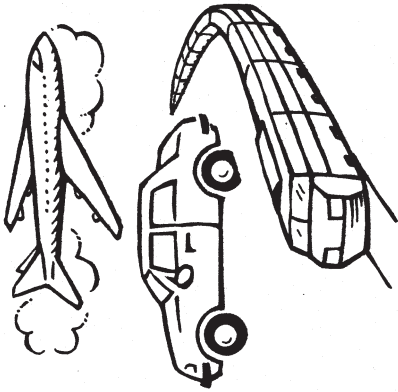
(Unit 5, Lesson 4)



shelter

A shelter is something that protects people from weather.

(Unit 5, Lesson 4 Connect to)



transportation

Transportation is the way people move from place to place.

(Unit 5, Lesson 5)



automobile

An automobile is a car.

(Unit 5, Lesson 5)