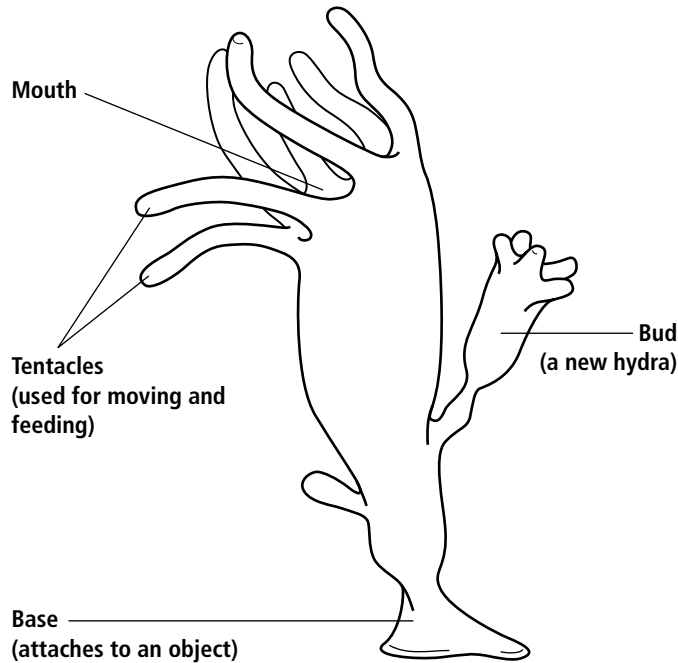


Hydra



A hydra is a many-celled animal. The cells are in two layers. The inside of the animal is hollow. Look for white stringy objects attached to the sides and bottom of the jar. When you see a hydra on the slide, look for the structures shown in the diagram.



Movement A hydra can stay in one place, glide on its base, or somersault using its tentacles.

Feeding A hydra stuns small organisms by shooting out stinging cells on its tentacles. Then the tentacles grab the food and stuff it into the mouth.

Reproduction A hydra grows a bud of cells on the outside of its body. When the bud develops into a small hydra with tentacles, it falls off and swims away.

Size 10 mm

Answer the following question.

Where do you think a hydra digests its food?
