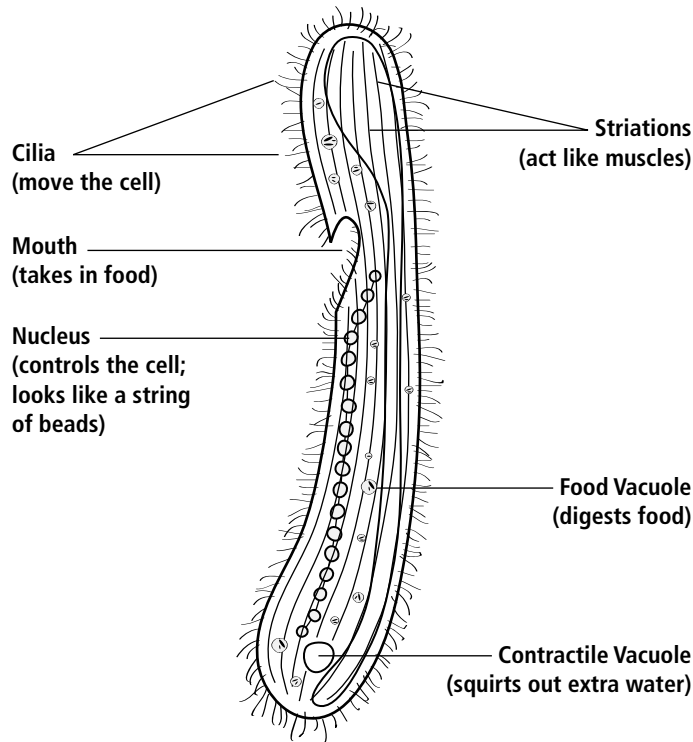


# Spirostomum



Spirostomum is a one-celled protozoan with a central digestive tube. Look for a long cylinder-shaped cell. When you see a spirostomum, look for the structures shown in the diagram.



**Movement** A spirostomum's body has spiral rows of cilia. The cilia beat back and forth to move the organism with a snake-like wiggling motion.

**Feeding** Beating cilia sweep small organisms into the spirostomum's mouth.

**Reproduction** The organism divides in half. The nucleus splits, too.

**Size** 1 to 3 mm (the largest and most complex one-celled protist)

**Answer the following question.**

Can a spirostomum make its own food? Explain

---



---



---