

Section 4 Assessment, Page 1



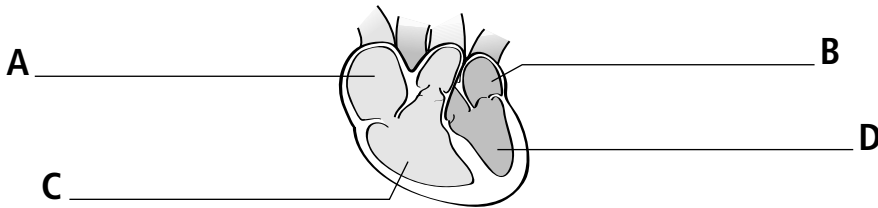
Vocabulary

Fill in the blanks with the correct word.

- 1 Blood is carried toward the heart by _____.
- 2 Blood is carried away from the heart by _____.
- 3 The tiny blood vessels where gases are exchanged are the _____.

Interpreting Diagrams

- 4 This diagram shows the structure of the heart. Label the left atrium, right atrium, left ventricle, and right ventricle.



- 5 When blood leaves A, where does it go?

- 6 Blood that enters B is coming from _____.

Section 4 **Assessment**, Page 2



Movement of Blood

- 7** Your teacher will show you some labeled index cards. Arrange the cards in the correct order to show how blood circulates in your body. Write the order here.
