

# Section 3 Assessment



## Vocabulary

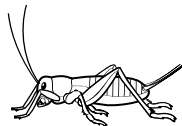
What kind of food does each of these consumers eat?

- 1 A carnivore eats \_\_\_\_\_.
- 2 An herbivore eats \_\_\_\_\_.
- 3 An omnivore eats \_\_\_\_\_.

## Cricket Body Parts

Fill in the blanks with the correct answers.

- 4 Crickets have \_\_\_\_\_ legs.
- 5 Crickets have \_\_\_\_\_ jaws that are found on the \_\_\_\_\_ of the mouth.
- 6 Male crickets make chirping sounds with their \_\_\_\_\_.
- 7 Crickets sense \_\_\_\_\_ with their feelers.
- 8 Crickets can jump 20 times their body length. Measure the picture of the cricket. Do not include the legs, antennas, and feelers in your measurement. Figure out how far the cricket can jump. Show your answer in both mm and cm.



This cricket can jump \_\_\_\_\_.