

Section 5 Assessment



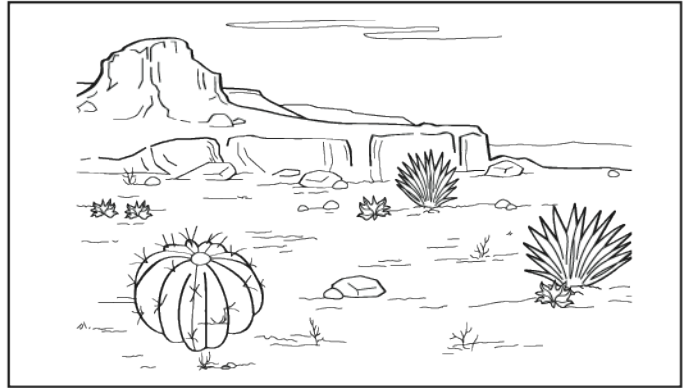
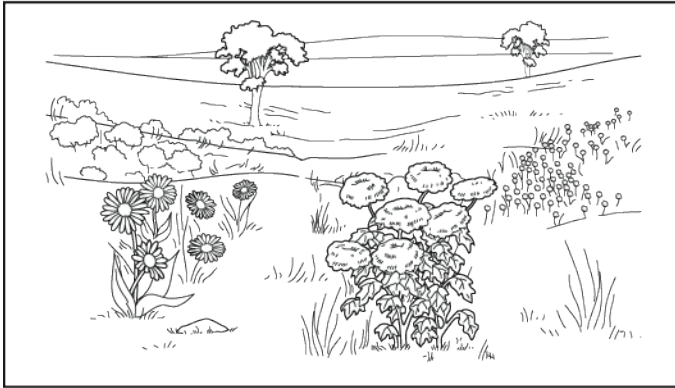
Vocabulary

1 Put a check next to the definition of control.

_____ an investigation that tests an idea

_____ anything that is kept the same in an experiment

Comparing Soils



2 Look at the pictures above. Which place has more humus in the soil? How can you tell?

Letting Water Through

3 Which object lets water pass through more quickly? Test them. Circle your answer.

leaf

bread