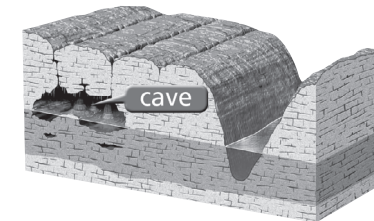


 **Test Tip**

Multiple Choice Read every answer choice, then choose the correct one. Do not decide too quickly!

1. What process forms a cave in limestone, as shown above?

- A. weathering and erosion from water underground
- B. deposition from rivers
- C. shifting rocks from earthquakes or volcanoes
- D. impact of organisms



S5E1b

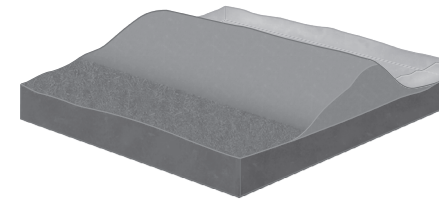
2. The Hawaiian Islands were built up by

- A. deposition.
 - B. weathering
 - C. volcanoes.
 - D. faults.
- and erosion.

S5E1a

3. People build the structure shown here along rivers. What is this structure meant to do?

- A. fight water pollution
- B. control floods
- C. keep boats away from the shore
- D. keep rain water out of the river



S5E1c

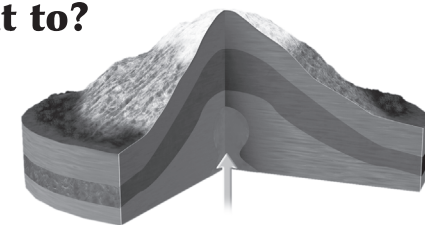
4. In a constructive process, the wind helps to form

- A. sand dunes.
 - B. caves.
 - C. volcanic
 - D. fault-block
- mountains. mountains.

S5E1a

5. This diagram shows a dome mountain. What does the arrow point to?

- A. groundwater
- B. rocks and ashes
- C. a fold mountain
- D. magma rising from Earth's interior



S5E1a