

# Quadrilaterals

**CA Standard**  
**KEY MG 2.3**

**A quadrilateral is a polygon with 4 sides and 4 angles.**



**Parallel** sides are the same distance apart in every place.

**Here are three special quadrilaterals.**



### Parallelogram

- 4 sides
- 4 angles
- opposite sides are parallel

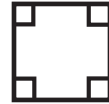
A parallelogram is a special type of quadrilateral.



### Rectangle

- 4 sides
- 4 right angles
- opposite sides are parallel

A rectangle is a special type of parallelogram with all angles equal.



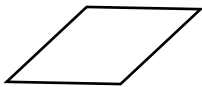
### Square

- 4 equal sides
- 4 right angles
- opposite sides are parallel

A square is a special type of rectangle with all sides equal.

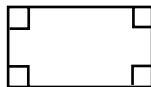
**Write the name of each quadrilateral. If it has special names, write them.**

1.



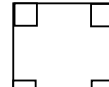
\_\_\_\_\_  
\_\_\_\_\_

2.



\_\_\_\_\_  
\_\_\_\_\_

3.



\_\_\_\_\_  
\_\_\_\_\_

4.



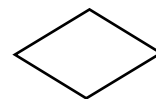
\_\_\_\_\_  
\_\_\_\_\_

5.



\_\_\_\_\_  
\_\_\_\_\_

6.



\_\_\_\_\_  
\_\_\_\_\_



**Writing Math** What is true about all quadrilaterals?