

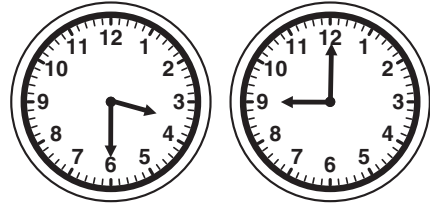


Name _____ Date _____

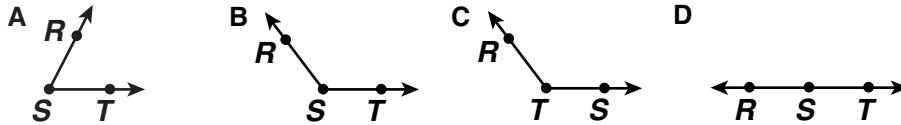
Geometric Figures

TAKS Objective 3
TEKS 4.8A

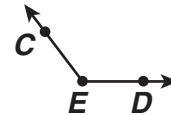
1. Gracie says that the hands on one of the clocks show a right angle. What time is it?



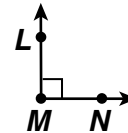
2. Drake drew an obtuse angle and labeled it RST . Which angle below is the one Drake drew?



3. Brenda drew the following angle. She described the angle as obtuse angle CDE . Explain what Brenda did wrong. What is the correct description?



4. Look at the angle. Describe the angle in as many ways as you can.



5. Draw an acute angle and label it XYZ . Then draw another angle with a measurement greater than angle XYZ that has ray EF . Is it possible for Point Z to be part of each angle? Explain.

6. Merideth and Luis both started at the same spot. They walked away from each other in opposite directions. They stayed on the same line. What angle did their paths form? Explain how you know.
